

CORNERED AUDIO C6



FEATURES

6 1/2" woofer
 1" dome tweeter with magnetic oil
 Aluminium cabinet
 Medium-SPL applications

COLOURS



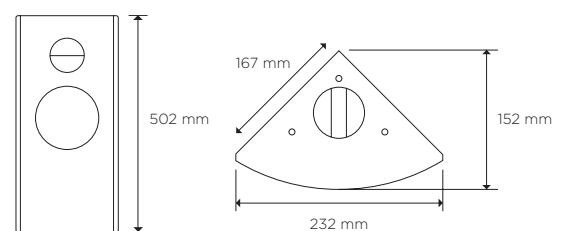
Description

Featuring high output in a compact form factor, the C6 is a top-box designed for medium SPL applications. The patented design allows the C6 to mount without brackets in most applications. The cable terminal is hidden behind the grille with access from the rear of the cabinet. With 120 degrees dispersion, a few speakers offer full coverage. Two or three boxes can be coupled together to expand coverage to 180 or 270 degree.

The Danish-designed 6 1/2" woofer is custom developed for the C6 model and offers excellent sensitivity and clarity. The tweeter features a silk dome with a wide surround offering excellent dispersion at high frequencies. With superb detail and resolution, the two drive units provide excellent speech intelligibility. The extruded aluminium cabinet features a MDF baffle and is well dampened while the triangular shape minimizes standing waves and reflections from inside the cabinet.

C6 is the perfect choice for medium SPL applications in entertainment venues. It can be used in full range applications, but functions best when supported by a sub.

DATA



Power handling, IEC268:	125 watt
Power handling, peak:	500 watt
Sensitivity, 2.83V/1m:	90 dB
Maximum SPL, long term:	111 dB
Maximum SPL, peak:	117 dB
Frequency response:	70-25.000 Hz
Nominal impedance:	8 ohm
Dispersion:	120x120 degree
Weight:	5.2 kg
Measurement:	(HxWxD) 502x232x167mm

CORNERED AUDIO C6

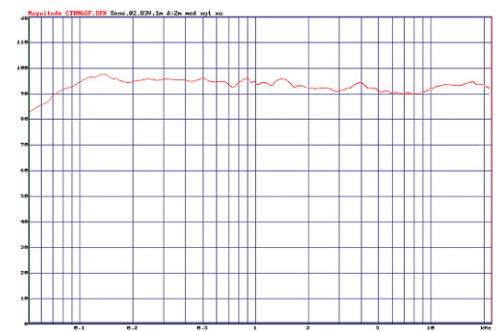
Architectural Specifications

The loudspeaker system shall consist of a 6 ½" woofer and a 1" tweeter with silk dome and with the voice coil dampened with magnetic oil for improved power handling. The second-order frequency dividing network shall utilize polypropylene capacitors to reduce hysteresis and air coils to reduce compression.

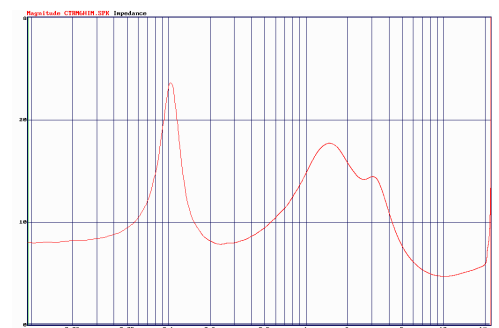
Performance specifications of a typical production shall be as follows: SPL at 1 m with 2.83 V input shall be at least 90 dB. Nominal impedance shall be 8 ohms, with minimum impedance being 5 ohm @ 10kHz. Rated power handling according to IEC 268-5 shall be at least 125 watt. Frequency response shall be from 70-25kHz +/- 3 dB.

The enclosure shall be rectangular in shape with no visible cable terminals and with a 90 degree angle allowing the speaker to be mounted in corners. It shall be manufactured of aluminium with an MDF baffle and shall incorporate integrated mounting points which allow the speaker to be mounted without brackets. Cabinet finish shall be satin white with a metal grille covered with white cloth or black with a metal grille covered with black cloth or aluminium with metal grille covered by grey cloth. Outside dimensions shall be no greater than 502mm (height) x 232mm (width) x 167mm (side) and weight shall be 5,2 kg. The loudspeaker system shall be the Cornered Audio C6.

FREQUENCY RESPONSE



IMPEDANCE



CORNERED Audio ApS
Roskildevej 16A
2620 Albertslund
Denmark

Mail info@cornered.dk
Tel +45 43 66 10 88
Web www.cornered.dk