

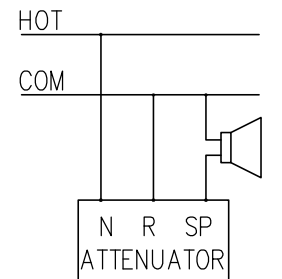
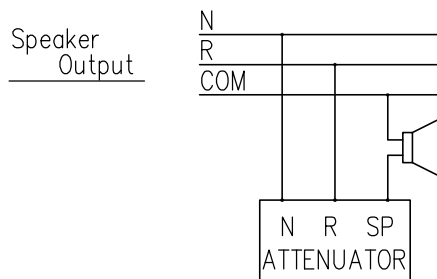
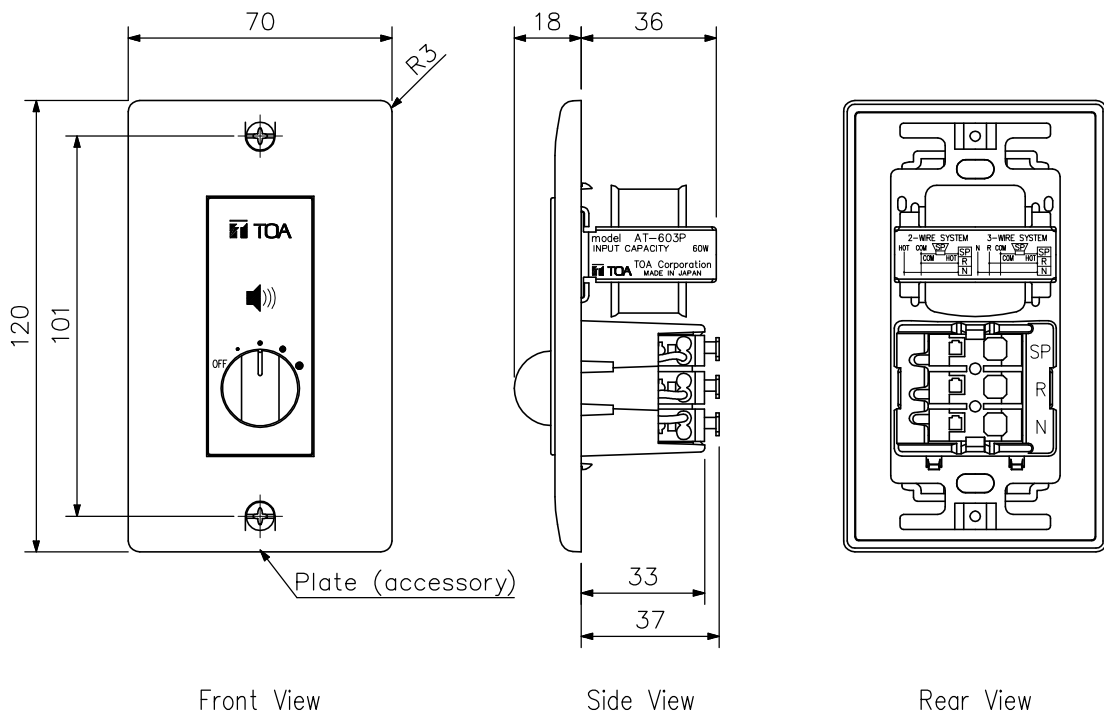
## DESCRIPTION

The AT-603P is a flush-mounted wall attenuator and uses a transformer which allows connection of a wide range of loads (under 60W). Volume can be adjusted in five steps. The AT-603P features push-in terminals, each of which accepts two conductors for easy bridging.

## SPECIFICATIONS

Input Range	0.5 – 60 W
Attenuation	5 steps (0 dB, -6 dB, -12 dB, -18 dB, OFF)
Usable Cable	600 V vinyl-insulated cable (Indoor Vinyl or Heat-resistant Indoor Vinyl cable) Solid cable: $\phi 0.8 - \phi 1.2$ mm Stranded cable (7 cores): $0.75 - 1.25$ mm <sup>2</sup>
Terminal	Push-in connector (bridging terminal)
Finish	Knob, panel, plate: ABS resin, milk white Case: ABS resin, black
Dimensions	70 (W) × 120 (H) × 55 (D) mm (with plate)
Accessory	Plate *1, Plate mounting screw *2, Box mounting screw *2

## APPEARANCE



UNIT:mm SCALE:1/2